



SAUGATUCK TOWNSHIP FIRE DISTRICT

Proudly serving : Douglas | Saugatuck | Saugatuck Township



3342 Blue Star Highway
Saugatuck, MI 49453
269 857-3000 / Fax: 269 857-1228
E-mail: office@saugatuckfire.org

May 18th, 2018

William LeFeverre - City Manager
City of the Village of Douglas
86 W. Center St.
Douglas, MI 49406

Mr. LeFeverre,

First, thank you for allowing the Saugatuck Township Fire District to participate with the City of the Village of Douglas on assessing the current hydrant infrastructure needs as they pertain to public safety. Currently all three proposed project areas share the same limitations for fire protection.

1. Higher density of structures in a small area.
2. Limited or extended distances to viable water supplies.
3. Smaller and more confined roadways limiting access for fire department apparatus.
4. Limited or inadequate water supply.

The benefits to public safety through these projects will significantly improve the water supply available for firefighting operations by reducing the need for long complex and time-consuming fire hose lays. The closer a fire hydrant is to the fire truck; the more water is available to put out the fire. This will also significantly reduce time spent by firefighters preparing a complex water supply allowing for faster extinguishment.

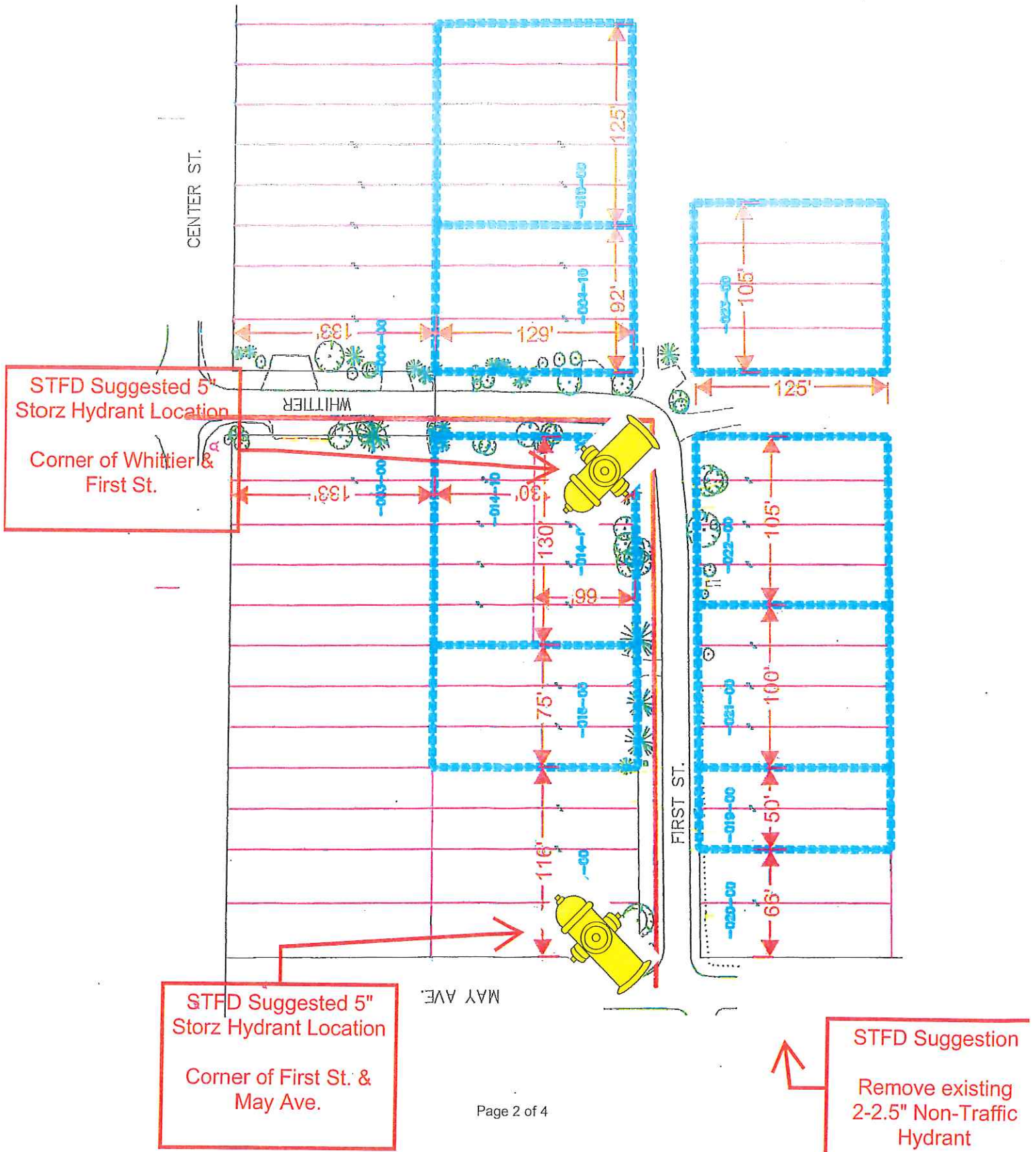
Having more fire hydrants available to higher density areas will significantly improve access for fire apparatus while reducing the need to close multiple roadways. When you have extended, over 400-foot hose lays, you eliminate access for required mutual aid departments. Additionally, having more available water supplies will improve the safety to fire department personnel and the citizens we serve.

The Saugatuck Township Fire District feels that the proposed projects would benefit public safety if funds are available to complete the project. In the maps below on subsequent pages, we indicated where we would suggest locating the proposed fire hydrants to best serve the citizens and the Fire District. Please let us know if you have any further questions or need more information.

Respectfully Yours,

Greg Janik
Fire Chief / Fire Marshal

Attachment A



ment A

on

&

on

on

GOLF VIEW

GOLF VIEW

Page 4 of 4

CAMPBELL ROAD

143'

100'

101'

94'

94'

100'

151'

80'

160'

140'

100'

75'

86'

100'

90'

100'

STFD Suggested 5"
Storz Hydrant Location
Corner of Campbell &
McVea

STFD Suggested 5"
Storz Hydrant Location
Corner of Campbell &
McVea

STFD Suggested 5"
Storz Hydrant Location

Mid - Block Between
Center & Golfview

STFD Suggested 5"
Storz Hydrant Location

Mid - Block Between
Center & Golfview

STFD Suggestion

Replace existing
2-2.5" Non-Traffic
Hydrant with 5" Storz
Hydrant

STFD Suggestion

Replace existing
2-2.5" Non-Traffic
Hydrant with 5" Storz
Hydrant

UNION ST.

Attachment A

STFD Suggested 5"
Storz Hydrant
Location

Corner of Fremont St.
& Mixer St.

MIXER ST.

CENTER ST.

DOUGLAS TOWN
HOME CONDO

ELLIS ST.

STFD Suggested 5"
Storz Hydrant
Location

Corner of Fremont St.
& Ellis St.