



2025 Leaf and Wooden Branch Pickup Schedule and Guidelines CITY OF THE VILLAGE OF DOUGLAS



The leaf and wooden branch program for the City of Douglas is intended to provide a disposal source for leaves and wooden branches. The City will pick up leaves and wooden branches from all public City streets according to the schedule. Private road maintenance is not a proper use of Act 51 funds; therefore, the City will not pick up leaves and wooden branches from private roads.

Is there a weekly yard waste pick up option with refuse collection?

The City is currently contracting with Republic Services of Jenison for refuse/recycling collection and disposal services. As part of the agreement, Republic offers a 96-gallon container plus 3 biodegradable paper bags as a seasonal option (April 1-November 30) with the weekly refuse pick up. Please call 877-698-7274 for further information and cost.

How are leaves and wooden branches accepted in the leaf and wooden branch program?

- ✓ Leaves must be unbagged (paper yard waste bags accepted).
- ✓ Leaves and wooden branches must be separated and placed behind the curb or road edge of the paved portion of the roadway; however, it must be reachable with the leaf truck or grapple claw.
- ✓ Leaves and wooden branches can be placed out up to, but not earlier than, three (3) days before a scheduled pick up. Leaves and wooden branches placed out after 7:00am on the schedule day will not be picked up.
- ✓ Wooden branches are to be stacked neatly in the same direction parallel to the road.
- ✓ Leaf and wooden branch piles that do not exceed 8 feet in length, 6 feet in width, and 4 feet in height. If pile exceeds the required size, please separate them into multiple piles.
- ✓ Wooden branches that are no larger than 6 feet long and 6 inches in diameter.

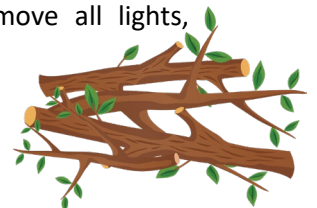
What is unacceptable in the leaf and wooden branch program?

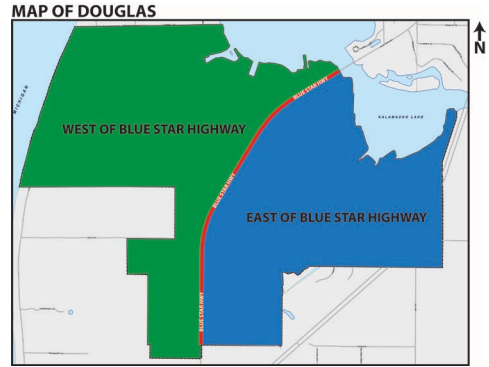
- ✗ Leaf or wooden branch piles that are stacked in the road or alleyway, on the sidewalk, near a storm drain, fence, landscaping, or parked vehicle.
- ✗ Except as permitted by the City's leaf and wooden branch pick up program, it shall be unlawful for any person to throw or deposit any refuse upon or into any street, right-of-way, alley, or waterway (Ordinance 54.05, Unauthorized Dumping and Littering).
- ✗ Wooden branch piles that are stacked perpendicular to the roadside.
- ✗ Leaf or wooden branch piles that exceed the size requirement.
- ✗ Leaf and wooden branch piles that are left from contracted work from a commercial landscaper who holds a valid license from a governing body.
- ✗ Material from lot clearing operations, tree removal (including stumps), large landscape projects, landscape timber, railroad ties, pet waste, bricks, lumber, fence debris, construction material, grass clippings, yard waste, pine/tree needles, or garden waste.

If piles are not in compliance with the City of Douglas' leaf and wooden branch program, a door hanger may be placed indicating what was found and corrective action by the Code Enforcement Officer or Department of Public Works crew. You are urged to compost grass clippings or mow clippings into your lawn. No person shall start or maintain any fire intended to dispose of leaves, brush, or other natural refuse (Ordinance 90.12, Prohibited Fires).

What about my live cut Christmas Tree?

The Department of Public Works does not pick up live cut Christmas Trees curbside but does offer an alternative. During the month of January, Douglas residents may drop off their live cut Christmas Tree (artificial trees are prohibited) at Schultz Park across from the dog park. Please remove all lights, ornaments, decorations, and the tree stand.



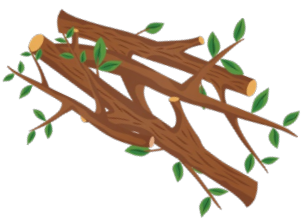


When is the scheduled pick up?

WEST OF BLUE STAR HIGHWAY	
PLACED AT THE CURB BY 7:00 AM TUESDAY MORNING THE WEEK OF	
April 8 & 22	Leaves and Wooden Branches
May 13 & 27	Leaves and Wooden Branches
May 27 will be our final spring sweep of the entire City for leaves	
June 10 & 24	Wooden Branches Only
July 8 & 22	Wooden Branches Only
August 12 & 26	Wooden Branches Only
September 9 & 23	Wooden Branches Only
September 30 will be our final summer sweep of the entire City for wooden branches	
October 14 & 28	Leaves Only
November 11 & 25	Leaves Only
December 2 will be our final fall sweep of the entire City for leaves	
EAST OF BLUE STAR HIGHWAY	
PLACED AT THE CURB BY 7:00 AM TUESDAY MORNING THE WEEK OF	
April 1 & 15	Leaves and Wooden Branches
May 6 & 20	Leaves and Wooden Branches
May 27 will be our final spring sweep of the entire City for leaves	
June 3 & 17	Wooden Branches Only
July 1 & 15	Wooden Branches Only
August 5 & 19	Wooden Branches Only
September 2 & 16	Wooden Branches Only
September 30 will be our final summer sweep of the entire City for wooden branches	
October 7 & 21	Leaves Only
November 4 & 18	Leaves Only
December 2 will be our final fall sweep of the entire City for leaves	

Due to the large workload associated with fall leaf pickup, City crews may not reach your property on the exact date of your scheduled pickup due to the large volume of leaf drop, however, please be sure to place your leaves out before your scheduled pickup date to ensure your leaves are removed. Leaves placed out after your scheduled pickup date and after City crews have serviced your street may not be collected and will become the responsibility of the property owner to dispose of. Should large windstorms or ice events occur, additional wooden branch pickup may follow the event.

Reminder - Leaf and wooden branch piles that are left from contracted work from a commercial landscaper who holds a valid license from a governing body will not be picked up – thank you.



Spring Clean Up Collection Days – June 2-5, 2025
 visit www.douglasmi.gov for more details

